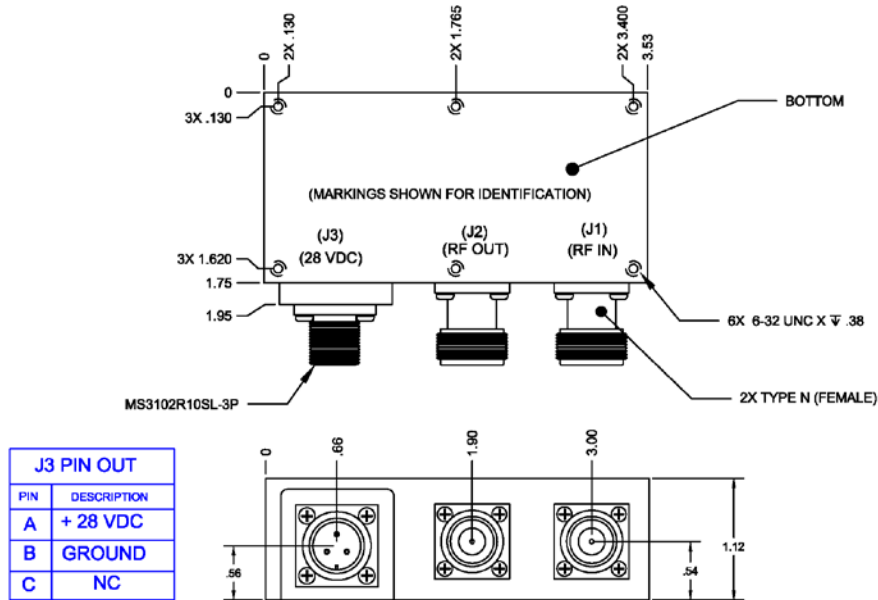




# AM-229-N

# UHF SATCOM LNA



## ELECTRICAL SPECIFICATIONS

Gain, 243 to 270 MHz	30 dB min.
Noise Figure, 243 to 270 MHz	0.8 dB max. @ 25° C
Bandwidth @ 1dB down (Relative to 256 MHz)	240-272 MHz min.
VSWR, Input (Ref. 50 Ohms)	1.5:1 max.
VSWR, Output (Ref. 50 Ohms)	1.5:1 max.
Reverse Isolation, 10 to 600 MHz	50 dB min.
Group Delay, 243 to 270 MHz	3 nS nom.
Input @ 1 dB gain compression, 243 to 270 MHz	-2.5 dBm min.
Input Signal 10 to 600 MHz, protection level	+20 dBm max.
Intercept point, third order, 243 to 270 MHz	+45 dBm nom.

## GENERAL CHARACTERISTICS

DC Operating Power	
Voltage:	+22 to +32 VDC
Current:	0.5 A nom.
Size (excluding connectors) Note 1	1.75" x 3.53" x 1.12"
Weight	9.5 ± 0.5 oz.
Connectors	
RF Input / Output	Type N (female)
DC Power	MS3102R10SL-3P

### NOTE 1:

This unit is required to be mounted on a chassis or baseplate to provide additional thermal dissipation.

REV 5/12/15