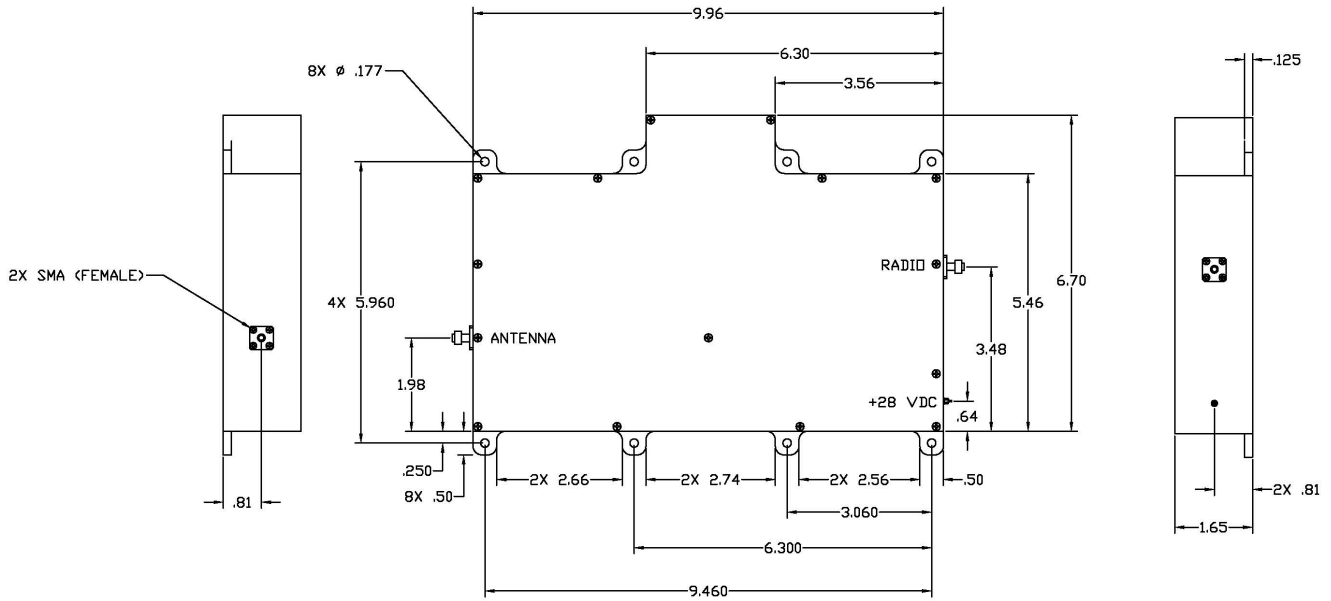




DFP-107A-1

SATCOM Diplexer/LNA



ELECTRICAL CHARACTERISTICS

RECEIVE CHANNEL

VSWR, ANT INPUT, 243-270 MHz	1.5:1 max.
Rejection: 0-225 MHz	90 dB min.
285-340 MHz.....	33 dB min.
340-370 MHz.....	60 dB min.
370-1000 MHz.....	80 dB min.
Gain 243-270 MHz	29.5 dB min./ 33 dB max.
Noise Figure	2.5 dB max.
Input @ 1 dB gain compression	-18 dBm min.
Input signal protection (243-270 MHz)	1 W max.
Intercept point, third order	+23 dBm nominal
Preamp Current (24-32 VDC)	0.1A max.
Reverse Isolation 0-270 MHz	50 dB min.

Measurement Tolerance:

LOSS: 0 to 1.5 dB, +/- .05 dB
1.6 to 40 dB, +/- 0.1 dB
Above 40 dB, +/- 2 dB

TRANSMIT CHANNEL

0-230 MHz	80 dB min.
243-265 MHz	55 dB min.
265-270 MHz	50 dB min.
291-294 MHz	1.2 dB max.
294-318.3 MHz	1.0 dB max.
375-400 MHz	55 dB min.
410-1000 MHz.....	80 dB min.
VSWR, 291-318.3 MHz	1.4:1 max.
Reverse VSWR, 291-318.3 MHz.....	1.5:1 max.

GENERAL CHARACTERISTICS

Size, Excluding Connectors.....	1.65" x 7.2" x 9.96"
Weight	4 lbs max.
Connectors	RF- Type SMA female
	DC- Solder Terminal

Rev 4/26/16