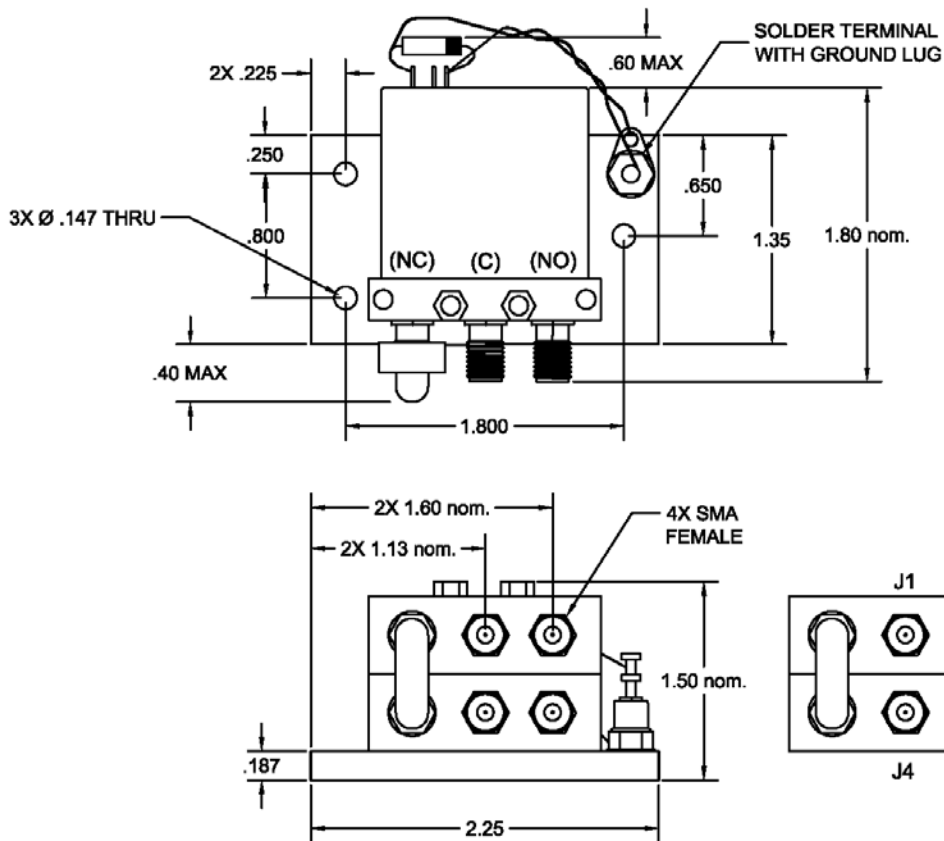




# CS-202 (PN: 160191)

# RF BYPASS SWITCH



## ELECTRICAL SPECIFICATIONS

Frequency 1-400 MHz  
 Type of Operation Failsafe, Break-Before-Make  
 Switching Time 15 ms max.

**DEACTIVATED 28 VDC OFF**  
 Insertion Loss, J1 to J4 0.1 dB max.  
 VSWR, J1 to J4 1.2:1 max.  
 Isolation, J1 or J4 to J2 or J3 90 dB min.

**ACTIVATED 28 VDC ON**  
 Insertion Loss, J1 to J2/ J3 to J4 0.1 dB max.  
 VSWR, J1 to J2/ J3 to J4 1.2:1 max.  
 Isolation, J1 or J2 to J3 or J4 90 dB min.

## GENERAL CHARACTERISTICS

Power Voltage +22 to +32 VDC  
 Current @ + 28VDC 0.22A nom., 0.26A max.  
 Temperature Operating -55°C to +85°C  
 Non-Operating -65°C to +110°C  
 Size, excluding connectors 2.25" x 1.50" x 1.80" nom.  
 Weight 3.4 oz. nom., 4 oz. max.

REV: 5/5/16