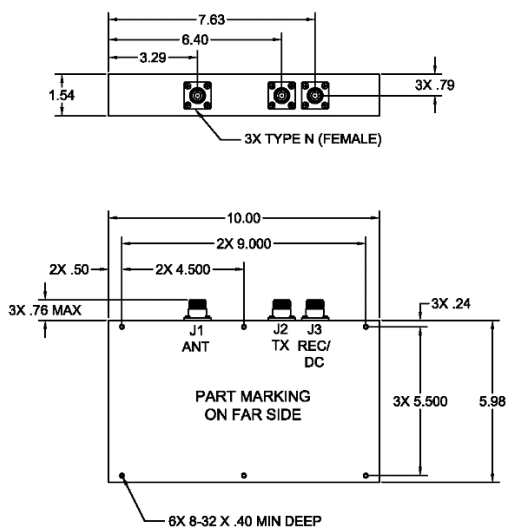




DFP-102RW-1 DIPLEXER PREAMPLIFIER

UHF SATCOM Diplexer/LNA with Integral Bias-T



ELECTRICAL SPECIFICATIONS

Receive Characteristics, J1 to J3

Passband	243-270 MHz
Gain, 243-270 MHz	28 dB min.
Gain Variation	1.5 dB max.
Rolloff, over passband	1.5 dB max.
VSWR, J1	1.6:1 max.
VSWR, J3	1.8:1 max.
Rejection	
0-125 MHz	80 dB min.
125-180 MHz	60 dB min.
180-200 MHz	45 dB min.
291-400 MHz	100 dB min.
400-720 MHz	70 dB min.
Noise Figure	2.5 dB max.
Input @ 1 dB gain compression	-20 dBm min.
Input Signal (protection level, passband)	1 W CW

Transmit Characteristics, J2 to J1

Passband	291-400 MHz
Insertion Loss	
291-292.5 MHz	0.8 dB max.
292.5-400 MHz	0.6 dB max.
VSWR, passband	1.4:1 max.
Rejection	
0-32 MHz	50 dB min.
32-225 MHz	35 dB min.
225-270 MHz	60 dB min.
Transmit RF Power Handling	+22 dBW max.

GENERAL CHARACTERISTICS

Power	
Voltage (into J3)	+15 VDC
Current, steady state	70 mA max.
Environment	Airborne/Shipboard
Size, excluding connectors	1.54" x 5.98" x 10.00"
Weight	5 lbs. max.

Rev 8/15/16