



FMA-223V HIGH ISOLATION

UHF/ SATCOM Diplexer HIGH OPERATING POWER



DESCRIPTION

Antenna diplexer for UHF SATCOM/DAMA system operation. The transmit channel covers 291-318.3 MHz, and will handle 250 W-CW operating power. The receive channel covers 243-270 MHz and has less than 1 dB loss.

FEATURES

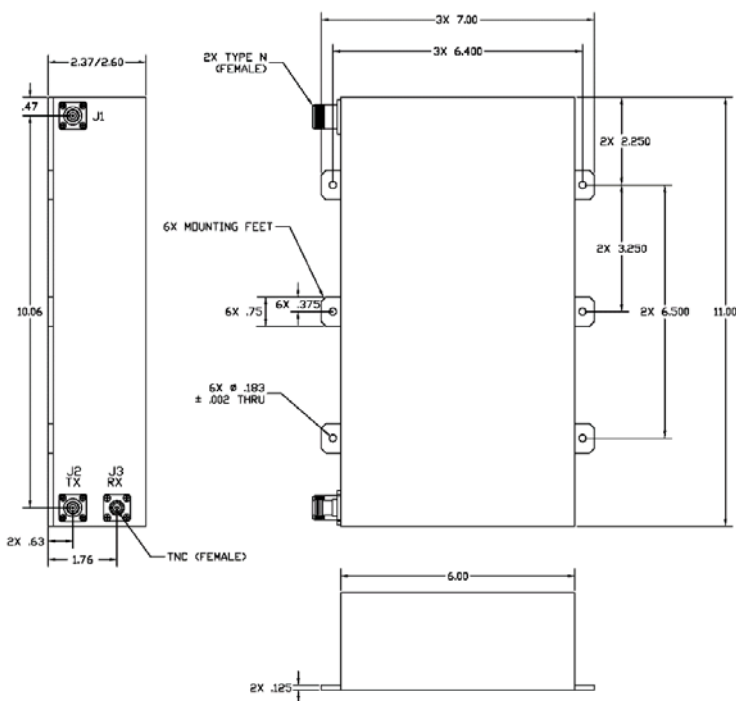
- Very high selectivity, allowing simultaneous operation of transmitter and a receiver. (full duplex)
- Type N or TNC connectors available.

FMA-223V

HIGH ISOLATION

UHF SATCOM Diplexer

HIGH OPERATING POWER



ELECTRICAL SPECIFICATIONS

RECEIVE CHANNEL CHARACTERISTICS

Passband	243-270 MHz
Insertion Loss over passband	0.9 dB max.
VSWR, over passband	1.5:1 max.
STOPBAND	
0-218 MHz	90 dB min.
292-400 MHz	100 dB min.
400-1200 MHz	90 dB min.
ISOLATION, TRANS to RCVR	
0-240 MHz	95 dB min.
240-270 MHz	90 dB min.
270-291 MHz	75 dB min.
291-310 MHz	90 dB min.
310-1200 MHz	95 dB min.

TRANSMIT CHARACTERISTICS

Passband	291-318.3 MHz
Insertion Loss over passband	1.0 dB max.
VSWR, over passband	1.4:1 max.
Input Power, max.	250 W CW
STOPBAND	
0-250 MHz	100 dB min.
250-267 MHz	95 dB min.
267-270 MHz	90 dB min.
350-400 MHz	100 dB min.
400-1200 MHz	90 dB min.

GENERAL CHARACTERISTICS

Environment	Airborne
Weight	7 lbs. max.
Size, excluding connectors	11.00" x 7.00" 2.60"
J1, ANT	Type N (female)
J2, TX	Type N (female)
J3, RX	TNC (female)

REV: 8/19/16