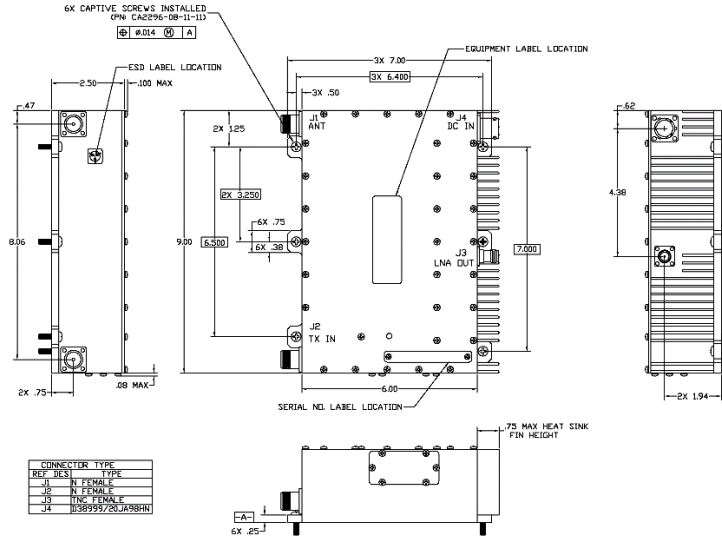




FAM-258A

DIPLEXER PREAMPLIFIER



ELECTRICAL SPECIFICATIONS

RECEIVE CHANNEL CHARACTERISTICS, J1 TO J3

Passband	243-270 MHz
VSWR, 243-270 MHz	1.5:1 max.
Stopband	
0-200 MHz	90 dB min.
200-220 MHz	60 dB min.
292-300 MHz	80 dB min.
300-1200 MHz	90 dB min.
Gain, 243-270 MHz	29 dB min.
Gain, 243-270 MHz	30.5 dB max.
Noise Figure, 243-270 MHz	1.8 dB max.
Input @ 1dB gain compression	0 dBm min.
Input Signal, max.** 240-270 MHz	100 mW, CW
Intercept Point, third order	40 dBm nom.
Rejection, TRANS to RCVR	
0-240 MHz*	75 dB min.
240-270 MHz*	40 dB min.
292-310 MHz*	50 dB min.
310-1200 MHz*	80 dB min.
Operating Current, +24 to +32 VDC	0.60A max.

* Includes Gain of Preamplifier

** Protection Level, higher beyond passband

TRANSMIT CHARACTERISTICS, J2 TO J1

Passband	291-318.3 MHz
Insertion Loss over passband	0.8 dB max.
VSWR, 291-318.3 MHz	1.3:1 max.
Input Power	250 W CW max.
Stopband	
0-250 MHz	90 dB min.
250-270 MHz	70 dB min.
350-1200 MHz	90 dB min.

GENERAL CHARACTERISTICS

Environment	Airborne
Size, excluding connectors/ mounting feet	9.00" x 7.25" x 2.50"
Weight	7.5 lbs. max.
Connectors	
J1 and J2	Type N (Female)
J3	TNC (Female)
J4	D38999-20JA98HN

REV: 9/19/16