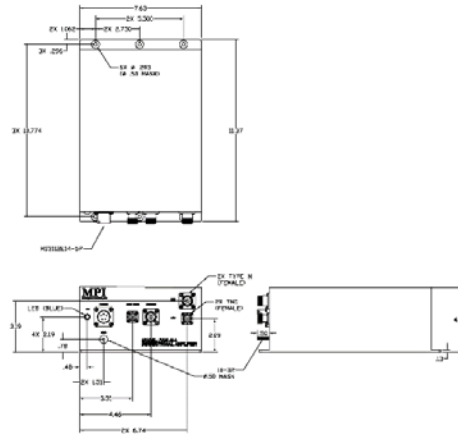




FAM-48A BIDIRECTIONAL AMPLIFIER

UHF SATCOM (DAMA) LNA/HPA



ELECTRICAL SPECIFICATIONS

RECEIVE CHANNEL CHARACTERISTICS, (Notes 2, 3)

Frequency Range	243-270 MHz
Gain, ± 0.5 dB (Note 2)	24.5 dB min.
Gain, ± 0.3 dB (Note3)	25.5 dB min.
Noise Figure	0.9 dB max.
VSWR	1.5:1 nom.
Input @ 1dB gain compression	0 dBm min.
Input Signal	100 mW CW max.
Intercept Point, third order	+43 dBm nom.
Rejection, (Note2)	
0-130 MHz	45 dB min.
130-190 MHz	35 dB min.
291-300 MHz	50 dB min.
300-450 MHz	70 dB min.
Reverse Isolation	50 dB nom.
Radio to Receiver Isolation	20 dB min.

NOTES:

1. XMT/RCV port to XMT port.
2. RCV port to XMT/RCV port.
3. RCV port to AUX RCVR port
4. DC applied via MS3112E14-5P or integral Bias-Tee on the XMT/RCV port.
5. The gain is a function of the transmit signal drive level.

TRANSMIT CHANNEL CHARACTERISTICS, (Note1)

Passband	291-318.3 MHz
Gain, (Note 5)	7 to 10 dB nom.
VSWR, 291-318.3 MHz	1.4:1 max.
Output Power (50K feet max.)	110 W CW max.
Stopband	
0-270 MHz	35 dB min.
360-1000 MHz	35 dB min.

GENERAL CHARACTERISTICS

Environment	Airborne
Weight	8.5 lbs. nom.
Size, Excluding connectors	11.37" x 7.63" x 4.03"
DC Operating Current, +28 VDC (Note 4)	14A max.
Connectors	
XMT/RCV, XMT	Type N (Female)
AUX/RCVR, RCV	TNC (Female)
POWER (Note 4)	MS3112E14-5P

REV: 9/19/16