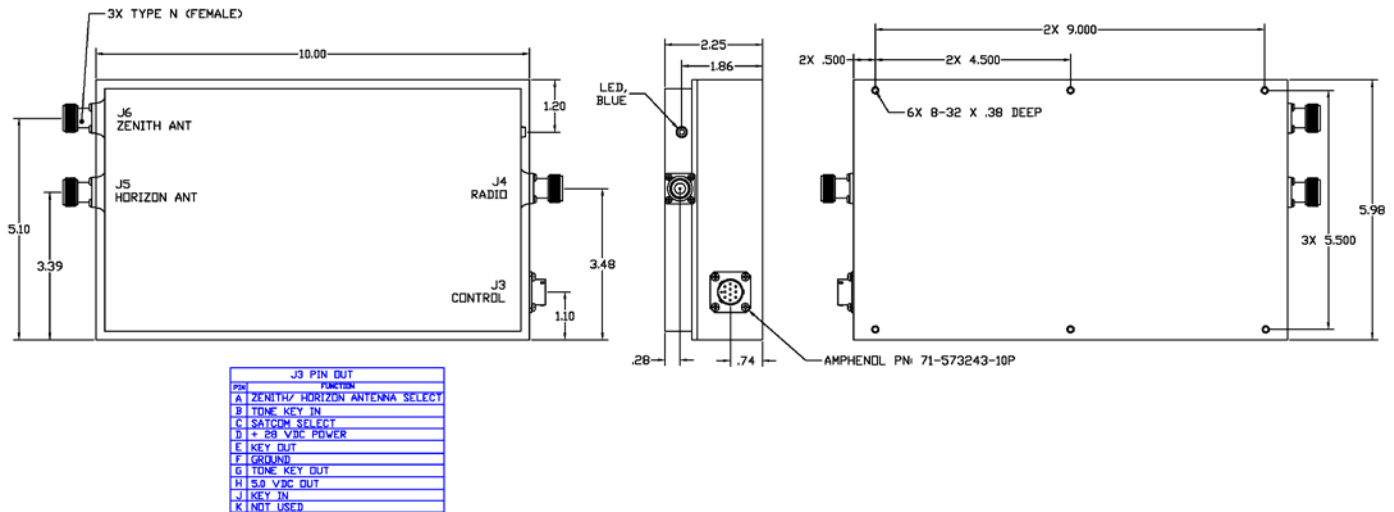




DFP-106ACS

DUAL DIPLEXER PREAMPLIFIER



ELECTRICAL SPECIFICATIONS

RECEIVE CHANNEL CHARACTERISTICS, J5 or J6 (Input), J4 (Output)

| | |
|---|--------------|
| Passband Roll-off, 243-270 MHz | 1.5 dB max. |
| VSWR, 243-270 MHz | 1.5:1 max. |
| Gain, 243-270 MHz | 28 dB min. |
| STOPBAND | |
| 0.3-216 MHz (Note 1) | 80 dB min. |
| 216-225 MHz (Note 1) | 60 dB min. |
| 355-1120 MHz (Note 1) | 70 dB min. |
| Noise Figure, 243-270 MHz | 2.5 dB max. |
| Input@ 1dB gain compression | -25 dB min. |
| Input Signal, Protection Level, 243-270 MHz | 1 W CW |
| Intercept point, third order | +20 dBm nom. |

TRANSMIT CHANNEL CHARACTERISTICS, J4 (Input), J5 or J6 (Output)

| | |
|--------------------------------------|---------------------------|
| Passband | 291-318.3 MHz |
| Insertion Loss over Passband | 1.0 dB max. |
| VSWR, over passband | 1.5:1 max. |
| Input Power | +21.5 dBW max. |
| STOPBAND | |
| 0.3-225 MHz | 90 dB min. |
| 225-270 MHz (Note 2) | 55 dB nom. |
| 355-1000 MHz | 60 dB min. |
| By-Pass Mode (J4 to J5): 225-400 MHz | 0.35 dB max., 1.35:1 max. |
| BIT Voltage Level | 5.0 ±0.1 VDC |

GENERAL CHARACTERISTICS

| | |
|-----------------|---------------------|
| Environment* | Airborne/ Shipboard |
| Weight | 6.6 lbs. max |
| Operating Power | |
| Voltage | 28 VDC nom. |
| Current | 500 mA max. |

* Not Directly Exposed to Weather

Note 1: Relative to Receive Passband.
Note 2: Limited by LNA reverse isolation.

REV: 12/19/16