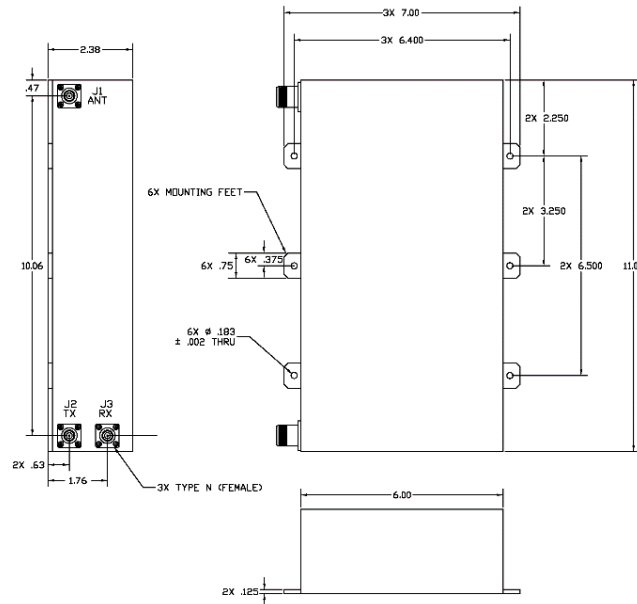




FMA-223V-S UHF SATCOM DIPLEXER

HIGH ISOLATION HIGH OPERATING POWER



ELECTRICAL SPECIFICATIONS

RECEIVE CHANNEL CHARACTERISTICS, (J1 – J3)

Passband	243-270 MHz
Insertion Loss over passband	1.0 dB max.
VSWR, over passband	1.5:1 max.
Stopband	
0-216 MHz	90 dB min.
292-400 MHz	95 dB min.
400-1200 MHz	90 dB min.
Isolation TX (J2) – RX (J3)	
0-240 MHz	95 dB min.
240-270 MHz	85 dB min.
291-310 MHz	95 dB min.
310-1200 MHz	90 dB min.

TRANSMIT CHANNEL CHARACTERISTICS, (J2 - J1)

Passband	291-318.3 MHz
Insertion Loss over passband	1.1 dB max.
VSWR, over passband	1.4:1 max.
Input Power, max.	250 W CW
Stopband	
0-265 MHz	95 dB min.
265-270 MHz	85 dB min.
350-400 MHz	95 dB min.
400-1200 MHz	90 dB min.

GENERAL CHARACTERISTICS

Environment	Airborne
Size, excluding connectors	11.00" x 7.00" x 2.38"
Weight	6 lbs. nom.
Connectors	Type N (Female)

Rev 9/28/16