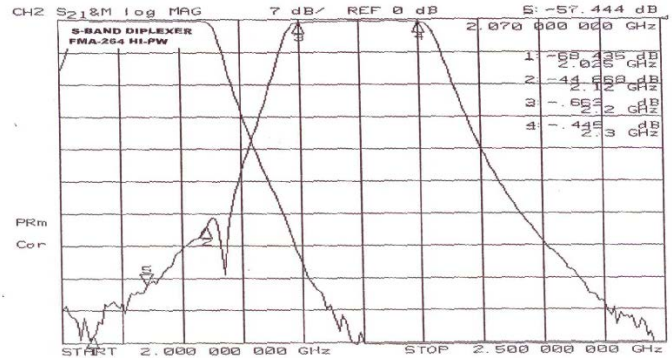
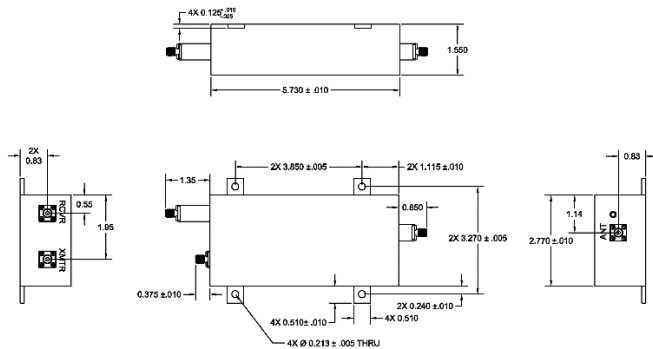




# FMA-264HI-PW

# S-BAND DIPLEXER



## DESCRIPTION

This diplexer was developed to operate in the S-Band system NASA networks. It covers the full S-Band range with low insertion loss and high inter-channel isolation.

Spurious frequencies in the receive channel are suppressed by 60 dB to 20 GHz. The transmit channel can accept signals up to 100 watts CW.

## ELECTRICAL SPECIFICATIONS

### TRANSMIT TO ANTENNA CHANNEL

Passband	2200-2300 MHz
Passband Loss	0.6 dB max.
Insertion Loss @ F <sub>c</sub>	0.4 dB max.
VSWR over passband	1.4:1 max.
Rejection	
@ 2120 MHz	45 dB min.
@ 2025 MHz	60 dB min.
Input Power, max.	100 W max.

### ANTENNA TO RCVR CHANNEL

Passband	2025-2120 MHz
Passband Loss	0.6 dB max.
Insertion Loss @ F <sub>c</sub>	0.4 dB max.
VSWR over passband	1.4:1 max.
Rejection	
@ 2200 MHz	50 dB min.
@ 2300 MHz	70 dB min.
to 20 GHz	60 dB min.

## GENERAL CHARACTERISTICS

Size, including connectors	7.93" x 3.79" x 1.55"
Connectors	SMA (Female)

## FEATURES

- Low Insertion Loss
- High Channel Isolation
- High Input Power
- Lightweight Rugged Construction
- Small Size

Rev 9/28/16