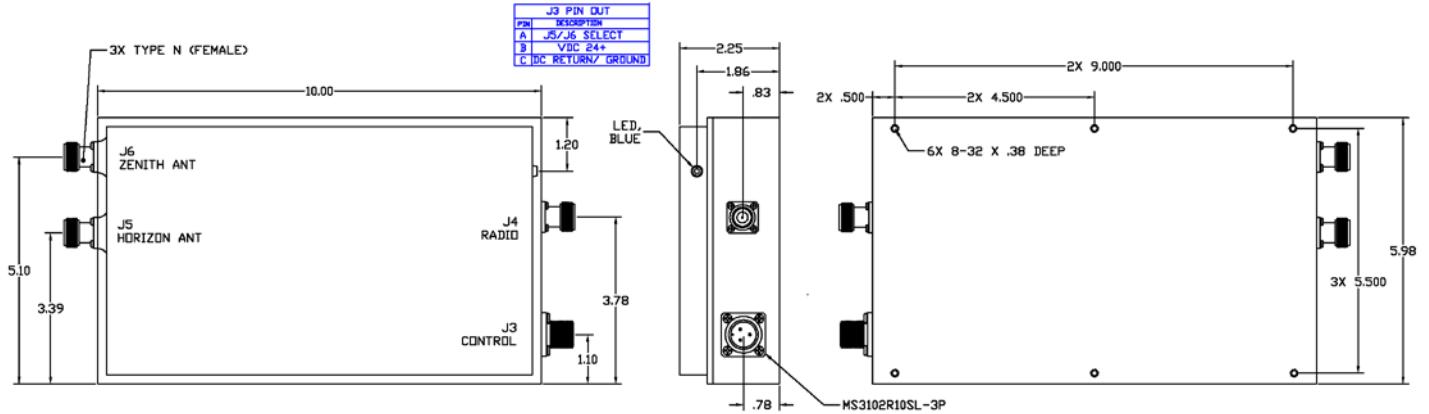




DFP-106ACS-1

DUAL DIPLEXER PREAMPLIFIER



ELECTRICAL SPECIFICATIONS

RECEIVE CHANNEL CHARACTERISTICS, J5 or J6 (Input), J4 (Output)

Passband Rolloff, 243-270 MHz	1.5 dB max.
VSWR, 243-270 MHz	1.5:1 max.
STOPBAND	
0-216 MHz	80 dB min.
216-230 MHz	50 dB min.
355-400 MHz	60 dB min.
400-1120 MHz	80 dB min.
Gain, 243-270 MHz	28 dB min.
Noise Figure, 243-270 MHz	2.6 dB max.
Input@ 1dB gain compression	-25 dBm min.
Input Signal, Protection Level, 243-270 MHz	1 W, CW
Intercept point, third order	+20 dBm nom.

Note 1: Limited by LNA reverse isolation.

TRANSMIT CHANNEL CHARACTERISTICS, J4 (Input), J5 or J6 (Output)

Passband	291-318.3 MHz
Insertion Loss, 295-315 MHz	0.9 dB max.
Insertion Loss over Passband	1.0 dB max.
VSWR, over passband	1.4:1 max.
Input Power	+21.5 dBW max.
STOPBAND	
0-225 MHz	90 dB min.
225-270 MHz (Note 1)	60 dB min.
355-400 MHz	60 dB min.
400-1000 MHz	80 dB min.

GENERAL CHARACTERISTICS

Environment	Airborne/ Weatherproof
Weight	6.2 lbs. max
Connectors	
J3 Power	MS3102R10SL-3P
J4-J6	Type N (Female)
Operating Power	
Voltage	+28 VDC nom.
Current @ +28 VDC nom.	330 mA max.

REV: 4/24/17