



DFP-102RW-2

UHF SATCOM DIPLEXER

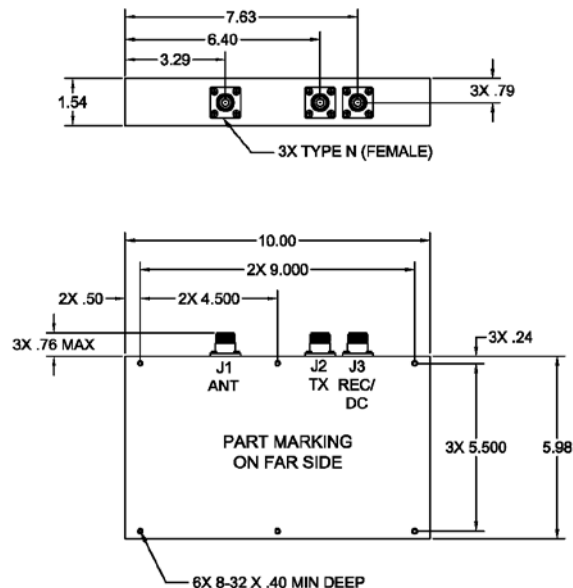


DESCRIPTION

Integrates a UHF SATCOM Transmit/ Receive diplexer and a low noise figure preamplifier into a single unit. This configuration allows a single antenna to be used with a UHF SATCOM transmitter (291 - 400 MHz) and a UHF SATCOM receiver (243 - 270 MHz), in operating modes of; half duplex, DAMA, or full duplex, without switching.

FEATURES

- Antenna Diplexer/LNA
- Very Low Noise Figure
- Compact Size
- Low Operating Power



ELECTRICAL SPECIFICATIONS

Receive Characteristics, J1 to J3

PASSBAND	243-270 MHz
VSWR, J1	1.6:1 max.
REJECTION	
0-125 MHz	80 dB min.
125-180 MHz	60 dB min.
180-200 MHz	45 dB min.
292-400 MHz	100 dB min.
400-720 MHz	70 dB min.
GAIN	28 dB min.
GAIN VARIATION/ ROLLOFF	1.5 dB max.
NOISE FIGURE	2.5 dB max.
INPUT @ 1dB gain compression	-20 dBm min.
INPUT SIGNAL (max.) @ ANT	1 W min.
INTERCEPT POINT, third order	+20 dBm nom.
PREAMP CURRENT (+22 to + 32 VDC)	70 mA nom.

Transmit Characteristics, J1 to J2

PASSBAND	291-400 MHz
INSERTION LOSS, Passband	0.7 dB max.
VSWR, Passband	1.4:1 max.
REJECTION	
0-32 MHz	50 dB min.
32-225 MHz	35 dB min.
225-270 MHz	60 dB min.
TRANSMIT POWER	+22 dBW max.

GENERAL CHARACTERISTICS

Environment	Shipboard/ Airborne
Size, excluding connectors	10.00" x 5.98" x 1.54"
Weight	5 lbs. max.
Connectors	Type N (Female)

REV: 6/23/17