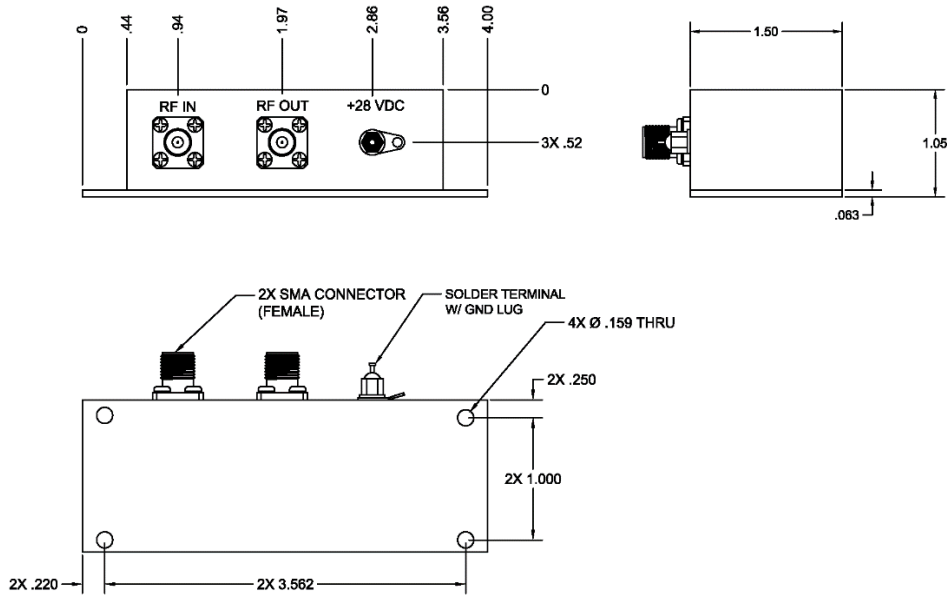




AM-212D2

LOW NOISE AMPLIFIER



ELECTRICAL SPECIFICATIONS

Bandwidth @3 dB down	225-400 MHz
VSWR, Input, 225-400 MHz	2.0:1 max.
VSWR, Output, 225-400 MHz	1.5:1 max.
GAIN, 225-400 MHz	
Minimum	31 dB
Maximum	34 dB
Noise Figure, 225-400 MHz	1.2 dB max.
Input@ 1dB gain compression	-19 dBm min.
Input signal, 2-1200 MHz (Protection Level)	+30 dBm max.
Intercept point, third order	+22 dBm nom.
Preamp V/I (+20 to +32 VDC), steady state (Note 1)	+28 VDC @ 100mA max.

GENERAL CHARACTERISTICS

WEIGHT	4.8 oz. nom.
SIZE, excluding connectors	4.00" x 1.50" x 1.05"
CONNECTORS*	
RF Input	SMA (Female)
RF Output	SMA (Female)
DC Input (Note 2)	Solder Terminal

*Other Connectors available

Notes

- 12 VDC optional
- MS3102R10SL-3P optional

REV: 8/4/2022