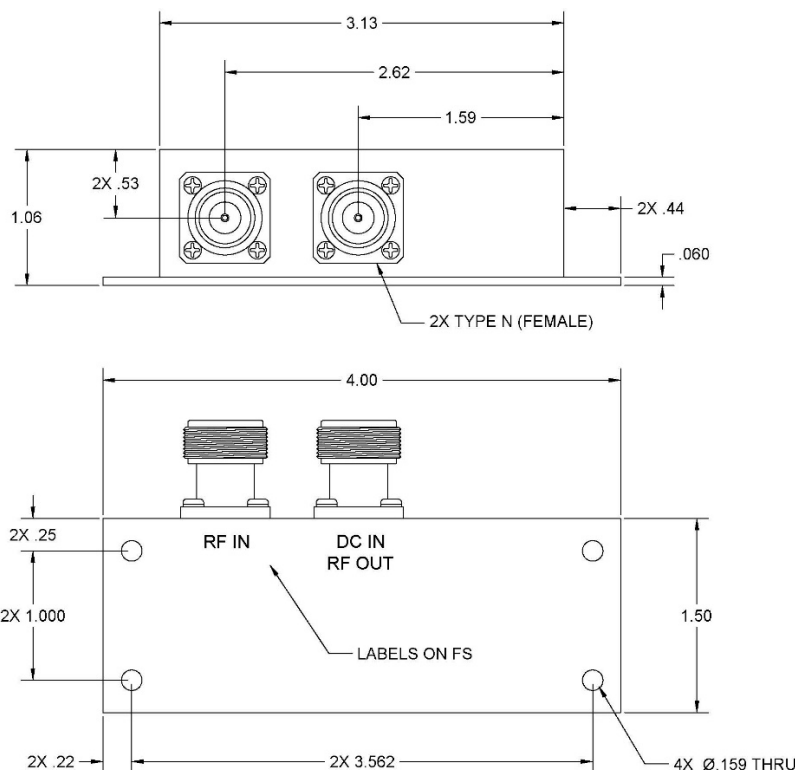




## AM-212SN LOW NOISE AMPLIFIER

## UHF/SATCOM OPTIMIZED INTEGRAL BIAS-TEE



### ELECTRICAL SPECIFICATIONS

Passband @ 1 dB down (Rel. to 256 MHz)	240-275 MHz min.
VSWR, Input (Ref. 50 Ω), 243-270 MHz	1.5:1 max.
VSWR, Output (Ref. 50 Ω), 243-270 MHz	1.4:1 max.
Gain, 243-270.5 MHz	34 dB min., 36.5 dB max.
Gain Rolloff, 0-80, 550-1000 MHz	30 dB min.
Noise Figure, 240-275 MHz	1.1 dB max.
Input @ 1 dB gain compression	-18 dBm nom.
Input Signal, 30-800 MHz, Input Port (protection level)	1 W CW max.
Reverse Isolation, 0-600 MHz	47 dB min.
Group Delay, 243-270 MHz	5-7 ns

### GENERAL CHARACTERISTICS

WEIGHT	6 oz. max.
SIZE, excluding connectors	4.00" x 1.50" x 1.06"
CONNECTORS	
RF Input	Type N (Female)
RF Output/ DC Input	Type N (Female)
DC Operating Power via internal bias-tee	
Voltage	+28 VDC nom.
Current	90 mA nom.

REV 11/18/2019