



DFP-102XN

DIPLEXER

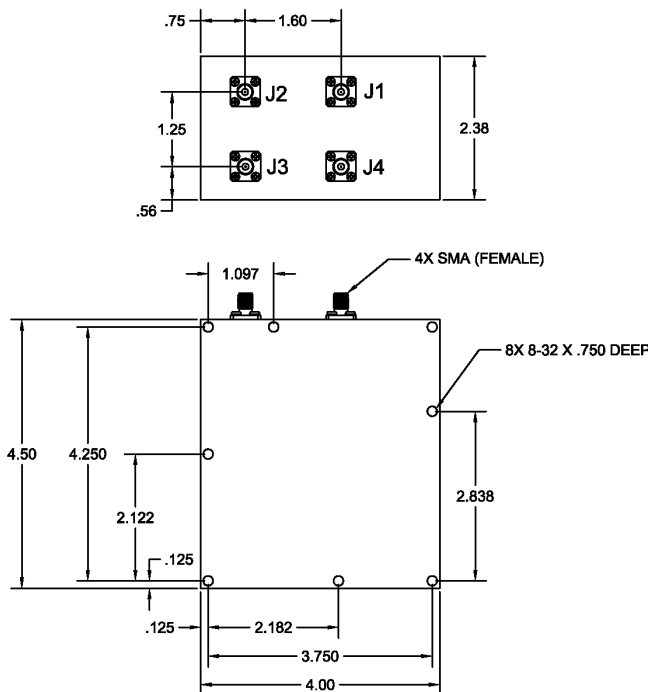


DESCRIPTION

Antenna Diplexer for UHF SATCOM/DAMA system operation. Provides input and output ports for an external low noise amplifier.

FEATURES

Excellent performance in a rugged, ultra-compact form factor. Allows simultaneous operation of a transmitter within 290-400 MHz, along with a receiver within 240-270 MHz.



ELECTRICAL SPECIFICATIONS

RECEIVE CHARACTERISTICS, J1-J2 or J3-J4

Passband	240-270 MHz
Insertion Loss	
240-248, 258-270 MHz	1.3 dB max.
248-258 MHz	0.8 dB max.
VSWR	1.5:1 max.
Rejection	
290-400MHz	80 dB min.
J1-J2, 2-30 MHz	80 dB min.
J1-J2, 900-1500 MHz	20 dB min.
J3-J4 ,900-1500 MHz	15 dB min.
Isolation, J2-J3, 270-290 MHz	45 dB min.

TRANSMIT CHARACTERISTICS, J4-J1

Passband	290-400 MHz
Insertion Loss	
290-292.5 MHz	0.9 dB max.
292.5-400 MHz	0.7 dB max.
VSWR	1.5:1 max.
Rejection	
240-270 MHz	70 dB min.
2-240 MHz	50 dB min.

GENERAL CHARACTERISTICS

Environment	Shipboard
Temperature Range	-28°C to +65°C
Weight	33 oz.
Connectors	SMA (Female)
Size, excluding connectors	4.50 x 4.00" x 2.38"

REV: 10/29/18