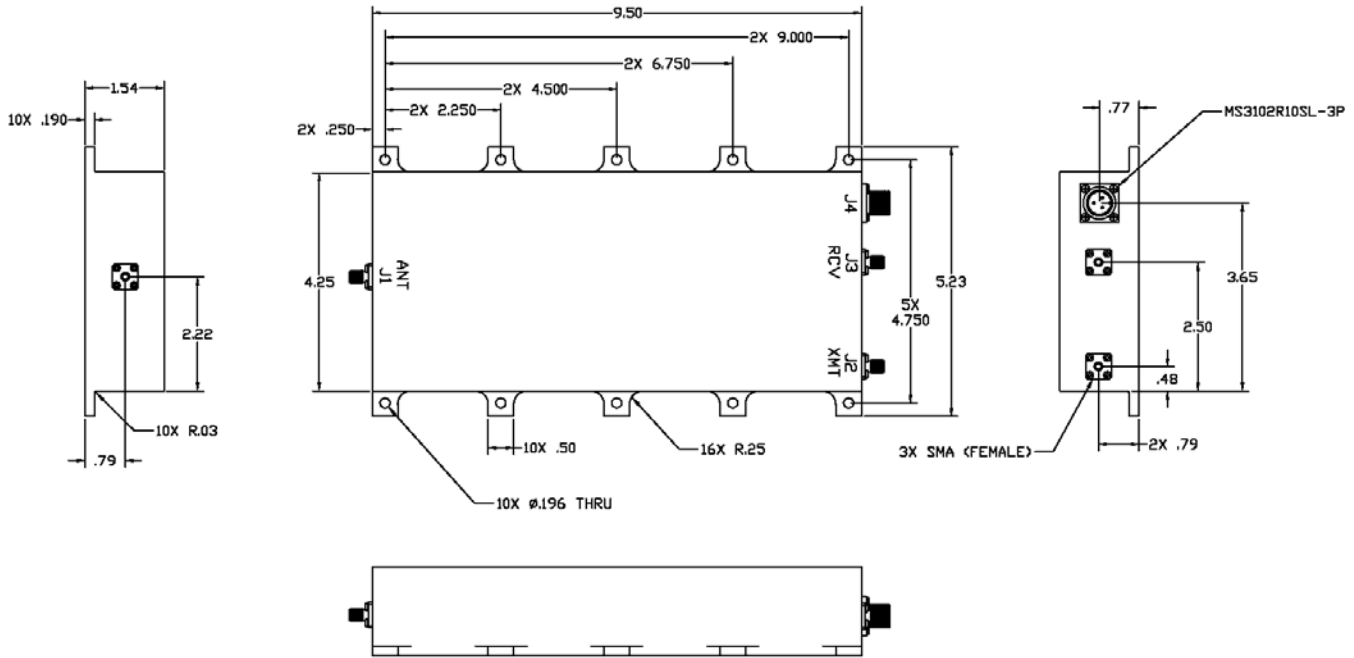




# DFP-106CBL

# ANTENNA DIPLEXER-PREAMPLIFIER



## ELECTRICAL SPECIFICATIONS

### RECEIVE CHARACTERISTICS, J1 to J3

Passband -1 dB max. roll-off	243-270 MHz
Gain, 243-270 MHz	30 dB min.
Stopband	
0-180 MHz	90 dB min.
180-215 MHz	60 dB min.
291-800 MHz	90 dB min.
800-2000 MHz	60 dB min.
VSWR, 243-270 MHz	1.5:1 max.
Noise figure, 243-270 MHz	2.5 dB max.
Input @1 dB gain compression	-18 dBm min.
Input Signal, protection level, 243-270 MHz	1 W CW
Intercept point, third order	+23 dBm nom.
*Isolation J2 to J3	
0-200 MHz	90 dB min.
200-240 MHz	75 dB min.
240-270 MHz	33 dB min.
291-300 MHz	63 dB min.
300-1150 MHz	90 dB min.

\*Includes Gain of Preamplifier

### TRANSMIT CHARACTERISTICS, J2 to J1

Passband	291-318.3 MHz
Insertion Loss, 295-315 MHz	0.8 dB max.
Insertion Loss, 291-318.3 MHz	1.0 dB max.
VSWR, 291-318.3 MHz	1.4:1 max.
RF Input Power, CW**	180 W max.
Stopband	
0-250 MHz	90 dB min.
250-270 MHz	60 dB min.
355-400 MHz	60 dB min.
400-1150 MHz	90 dB min.

## GENERAL CHARACTERISTICS

Environment	Airborne, Shipboard, (not exposed)
Size, excluding connectors	1.54" X 5.23" x 9.50"
Weight	3 lbs. max.
Operating Current, +22 to +32 VDC	90 mA nom.
**Duty Cycle, Heat Sink, and Operating Temperature Dependent	

REV: 7/1/2021