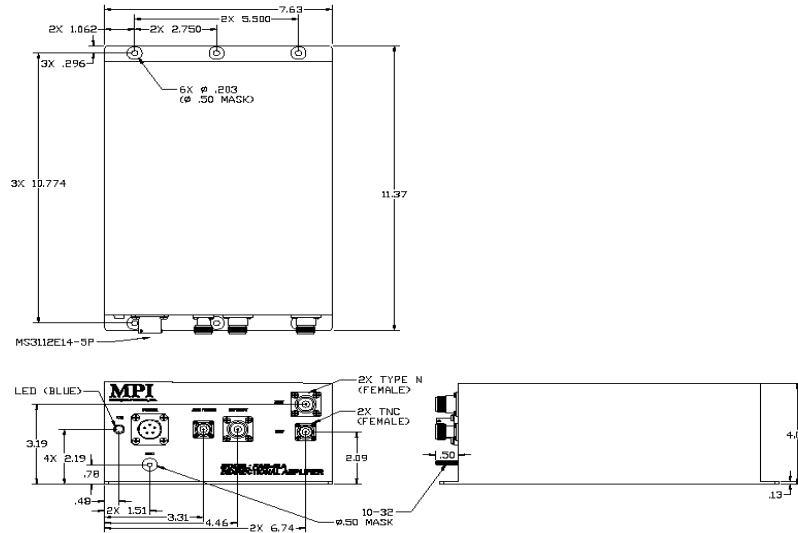




FAM-48A BIDIRECTIONAL AMPLIFIER

UHF SATCOM (DAMA) LNA/HPA



ELECTRICAL SPECIFICATIONS

RECEIVE CHANNEL CHARACTERISTICS (Notes 2, 3)

| | |
|--|--------------------------|
| Frequency Range | 243-270 MHz |
| Gain (Note 2) | 25 dB min. 28 dB max. |
| Gain (Note 3) | 26 dB min. 29 dB max. |
| Gain Variation, 243-270 MHz | 1.5 dB max. |
| Noise Figure | 0.9 dB max. |
| VSWR | 1.5:1 max. |
| Input @ 1dB gain compression | 0 dBm +/- 1 dBm |
| Input Signal | 100 mW CW max. |
| Intercept Point, third order | +43 dBm nom. |
| Rejection (Note2) | |
| 0-130 MHz | 60 dB min. |
| 130-190 MHz | 40 dB min. |
| 291-300 MHz | 60 dB min. |
| 300-520 MHz | 80 dB min. |
| Reverse Isolation, XMT/RCVR to RCV | 55 dB min. |
| Radio to Receiver Isolation, 200-291 MHz | 20 dB min. |
| 291-520 MHz | 80 dB min. |

TRANSMIT CHANNEL CHARACTERISTICS (Note1)

| | |
|--|-----------------|
| Passband | 291-318.3 MHz |
| Gain (Note 4) | 7 to 10 dB nom. |
| VSWR, 291-318.3 MHz | 1.5:1 max. |
| Output Power (50K ft max. ALT), 15 W Input | 100 W CW min. |
| Stopband | |
| 0-270 MHz | 70 dB min. |
| 360-400 MHz | 60 dB min. |
| 400-1000 MHz | 80 dB min. |

GENERAL CHARACTERISTICS

| | |
|--------------------------------|------------------------|
| Environment | Airborne |
| Weight | 8.5 lbs. nom. |
| Size, Excluding connectors | 11.37" x 7.63" x 4.03" |
| DC Operating Current @ +28 VDC | |
| Receive Mode | 0.6A max. |
| Transmit Mode, 15 W Input | 14A max. |
| Connectors | |
| XMT/RCV, XMT | Type N (Female) |
| AUX/RCVR, RCV | TNC (Female) |
| POWER | MS3112E14-5P |

NOTES:

1. XMT/RCV port to XMT port.
2. RCV port to XMT/RCV port.
3. RCV port to AUX RCVR port.
4. The gain is a function of the transmit signal drive level.

REV: 5/16/2019