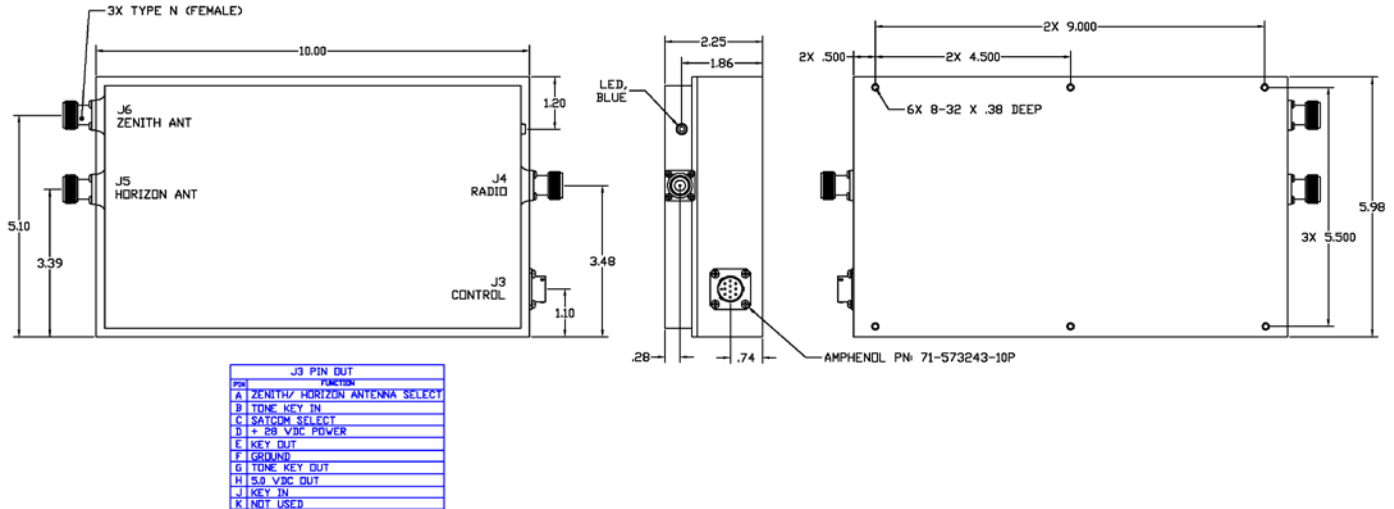




# DFP-106ACS

# DUAL DIPLEXER PREAMPLIFIER



## ELECTRICAL SPECIFICATIONS

### RECEIVE CHANNEL CHARACTERISTICS, J5 or J6 (Input), J4 (Output)

Passband Roll-off, 243-270 MHz	1.5 dB max.
VSWR, 243-270 MHz	1.5:1 max.
Gain, 243-270 MHz	28 dB min.
<b>STOPBAND</b>	
0.3-216 MHz (Note 1)	80 dB min.
216-225 MHz (Note 1)	60 dB min.
355-1120 MHz (Note 1)	70 dB min.
Noise Figure, 243-270 MHz	2.5 dB max.
Input@ 1dB gain compression	-25 dB min.
Input Signal, Protection Level, 243-270 MHz	1 W CW
Intercept point, third order	+20 dBm nom.

### TRANSMIT CHANNEL CHARACTERISTICS, J4 (Input), J5 or J6 (Output)

Passband	291-318.3 MHz
Insertion Loss over Passband	1.0 dB max.
VSWR, over passband	1.5:1 max.
Input Power	+21.5 dBW max.
<b>STOPBAND</b>	
0.3-225 MHz	90 dB min.
225-270 MHz (Note 2)	55 dB nom.
355-1000 MHz	60 dB min.
By-Pass Mode (J4 to J5): 225-400 MHz	0.35 dB max., 1.35:1 max.
BIT Voltage Level	5.0 ±0.1 VDC

## GENERAL CHARACTERISTICS

Environment*	Airborne/ Shipboard
Weight	6.6 lbs. max
Operating Power	
Voltage	28 VDC nom.
Current	500 mA max.

\* Not Directly Exposed to Weather

Note 1: Relative to Receive Passband.  
Note 2: Limited by LNA reverse isolation.

REV: 12/19/16