



FAM-258EL

DIPLEXER PREAMPLIFIER

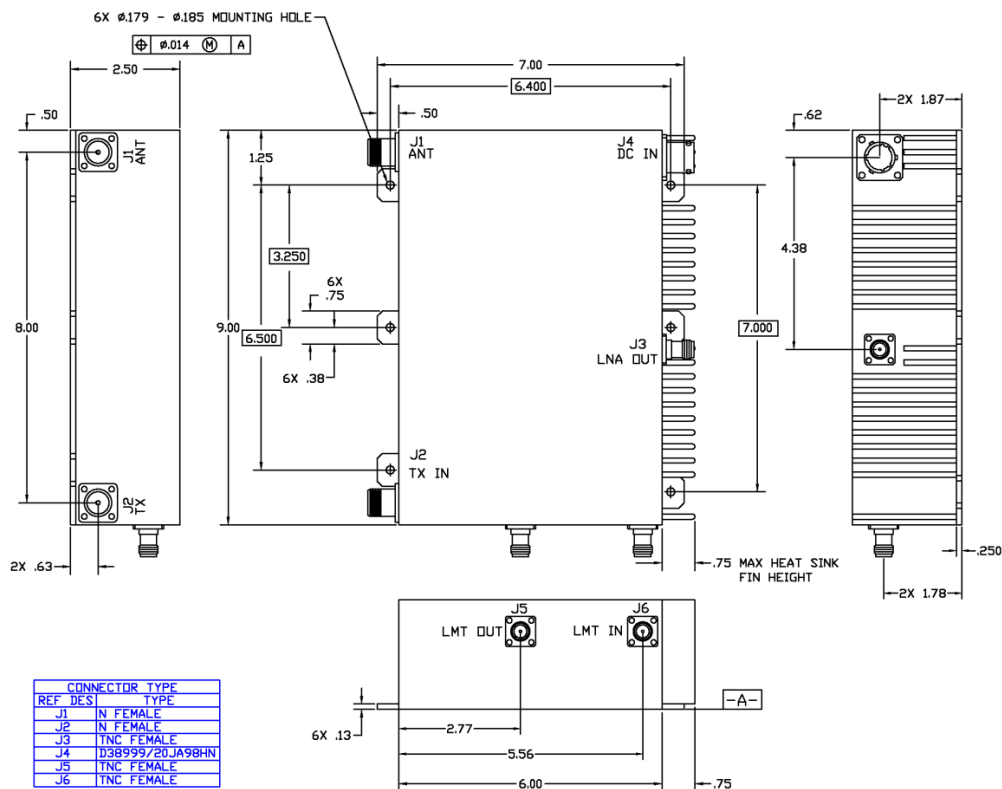


DESCRIPTION

A UHF SATCOM Diplexer and Preamplifier, a separate Diplexer Receive Channel Output and Preamplifier Input to allow inclusion of an external RF Limiter. The model has passed CS-116 Testing for electrical current and voltage waveforms occurring in platforms from excitation of natural resonances.

FEATURES

- Low Diplexer passband loss
- Low Preamplifier Noise Figure
- High Gain/ Dynamic Range



RECEIVE CHANNEL CHARACTERISTICS J1 TO J3 (with J5 and J6 interconnected)

Passband	243-270 MHz
VSWR, over passband	1.5:1 max.
STOPBAND	
0-200 MHz	90 dB min.
200-220 MHz	60 dB min.
292-300 MHz	80 dB min.
300-1200 MHz	90 dB min.
GAIN	
243-270 MHz	29 dB min.
243-270 MHz	30.5 dB max.
Noise Figure, 243-270 MHz	1.9 dB max.
Input @ 1dB gain compression	0 dBm nom.
Input signal, Protection Level, 240-270 MHz	100 mW CW
Intercept point, third order	40 dBm nom.
ISOLATION, TRANS TO RCVR	
0-240 MHz	75 dB min.
240-270 MHz	40 dB min.
292-310 MHz	50 dB min.
310-1200 MHz	80 dB min.

TRANSMIT CHANNEL CHARACTERISTICS J2 TO J1

Passband	292-318 MHz
Insertion Loss, over passband	0.8 dB max.
VSWR, over passband	1.3:1 max.
Input Power, maximum	250 W CW
STOPBAND	
0-250 MHz	90 dB min.
250-270 MHz	70 dB min.
350-1200 MHz	90 dB min.

GENERAL CHARACTERISTICS

Environment	Airborne
Weight	7 pounds max.
Power	
Voltage	24-32 VDC
Current, operating	0.6A nom.
CONNECTORS	
J1, J2	Type N (female)
J3, J5, and J6	Type TNC (female)
J4	D38999-20JA98HN
Size, excluding connectors	9.00" x 7.25" x 2.50"

REV: 14 MAY 15