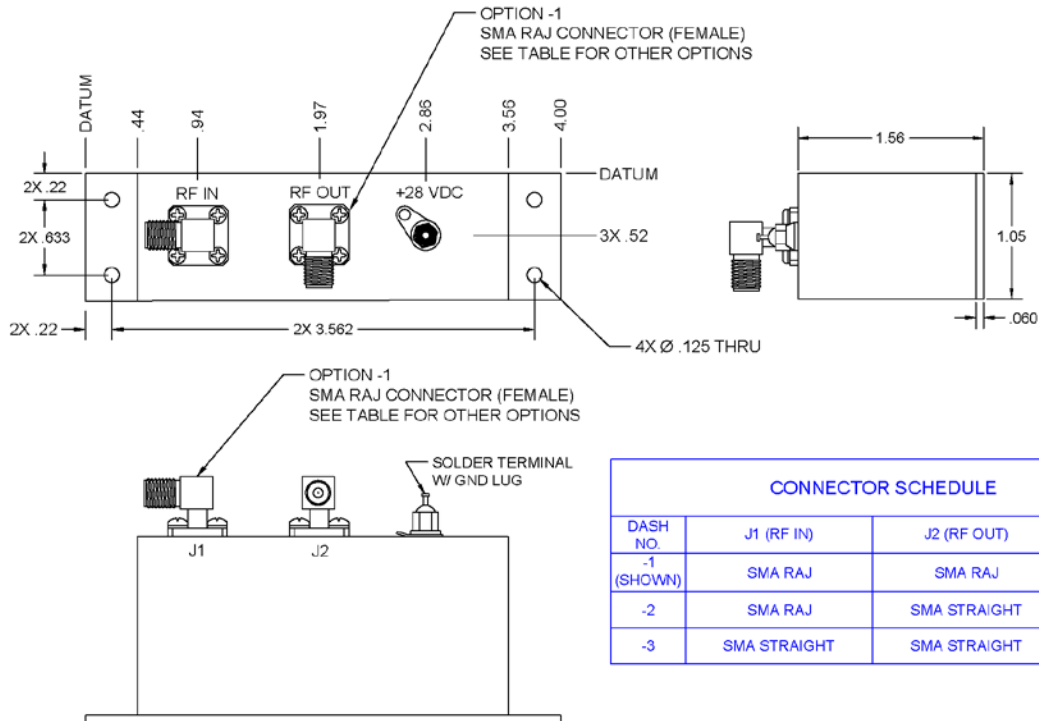




# AM-212D4

# LOW NOISE AMPLIFIER



## ELECTRICAL SPECIFICATIONS

Bandwidth, minimum @2 dB down	235-385 MHz
VSWR, Input, 235-385 MHz	2.0:1 max.
VSWR, Output, 235-385 MHz	1.5:1 max.
GAIN, 235-385 MHz	
Minimum	33 dB
Maximum	36 dB
Noise Figure, 235-385 MHz	1.2 dB max.
Input @ 1dB gain compression	-19 dBm min.
Input signal, 2-1200 MHz (Protection Level)	+30 dBm max.
Intercept point, third order	+22 dBm nom.

Preamp V/I (+20 to +32 VDC)

+28 VDC @ 90mA nom.

## GENERAL CHARACTERISTICS

WEIGHT	4.8 oz. nom.
SIZE, excluding connectors	4.00" x 1.56" x 1.05"
CONNECTORS*	
DC	Solder Terminal
RF Input	SMA, RAJ (Female)
RF Output	SMA, RAJ (Female)

\*Option 1 standard, other Connectors are available

REV: 11/6/2020